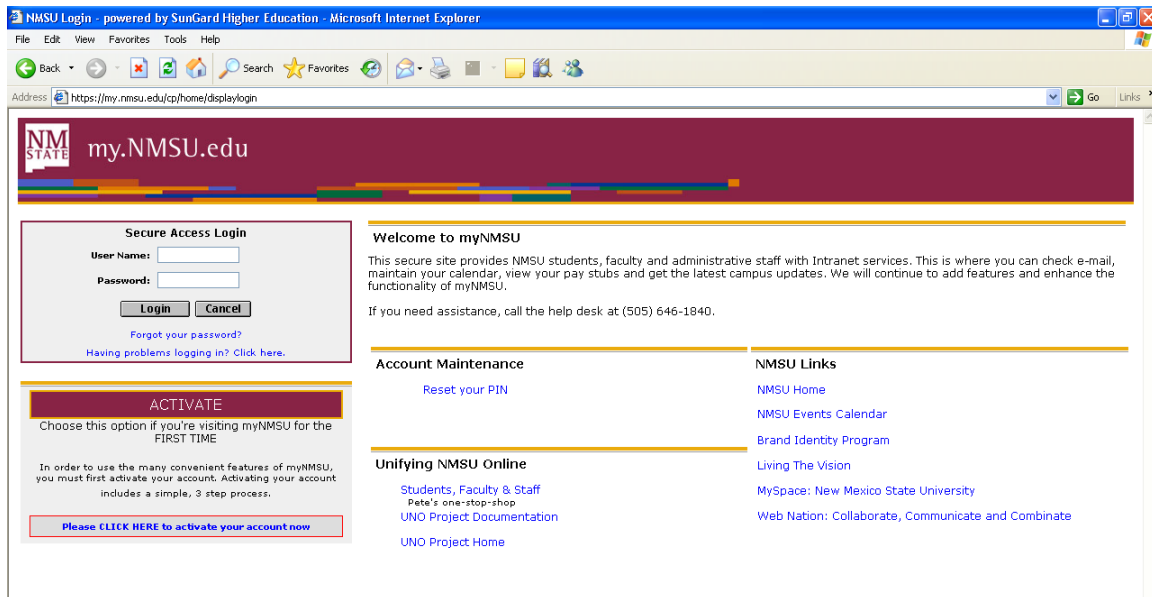


To Choose a Lender.

1. Go to my.nmsu.edu and log in.



2. Click on the “Student and Financial Aid” tab.

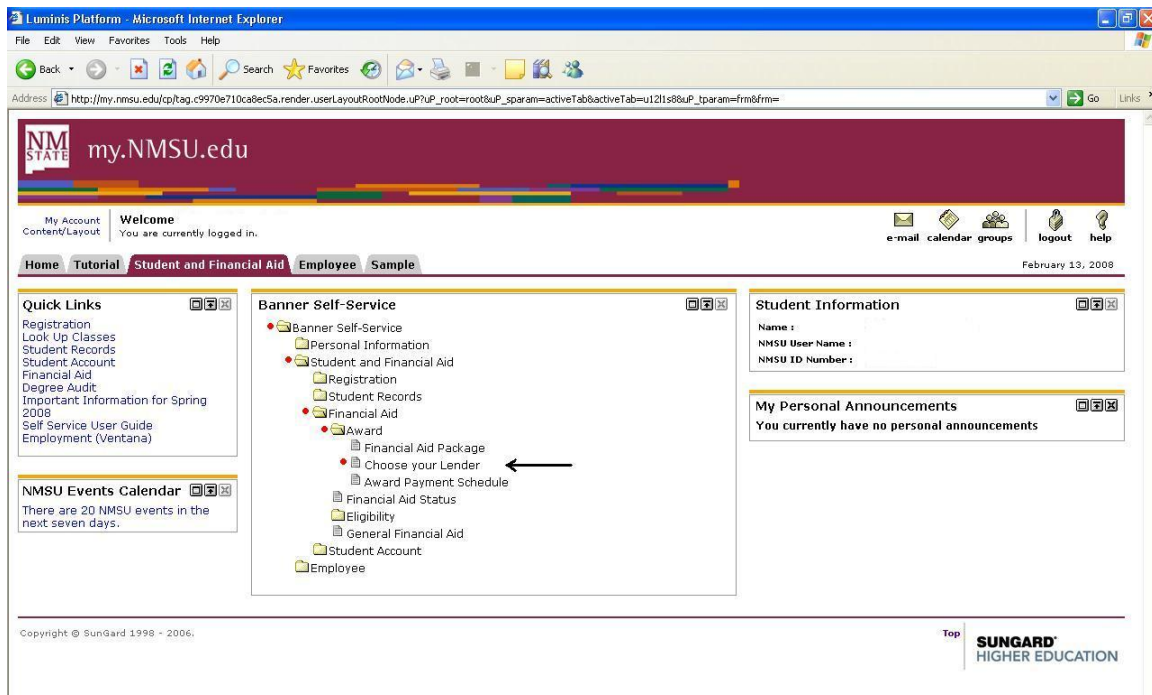
Then on “Banner Self-Service”

“Student and Financial Aid”

“Financial Aid”

“Award”

And finally “Choose your Lender”



3. Here you will be able to choose from one of our preferred lenders. Once you have chosen your lender, click on "Submit Form"

The screenshot shows a web browser window titled "Luminis Platform - Microsoft Internet Explorer". The address bar contains a long URL starting with "http://my.nmsu.edu/cp/render...". The page header includes "my.NMSU.edu" and navigation links for "e-mail", "calendar", "groups", "logout", and "help". A breadcrumb trail shows "back to Student and Financial Aid Tab". The main content area has tabs for "Personal Information", "Student and Financial Aid", and "Employee". Below the tabs is a search bar with a "Go" button and links for "SITE MAP" and "HELP". The user's name, "Richard A. Archuleta", is displayed. A message reads: "Please select a Lender if you are going to accept a loan. You can use the drop-down box below for our preferred lender list." Below this is a form with a "Preferred Lender List" dropdown menu (currently showing "NONE") and a text input field for a "six digit Lender code". A "Submit Form" button is located below the form. At the bottom left, it says "RELEASE: 7.3.3" and at the bottom right, "powered by SUNGARD SGT HIGHER EDUCATION".